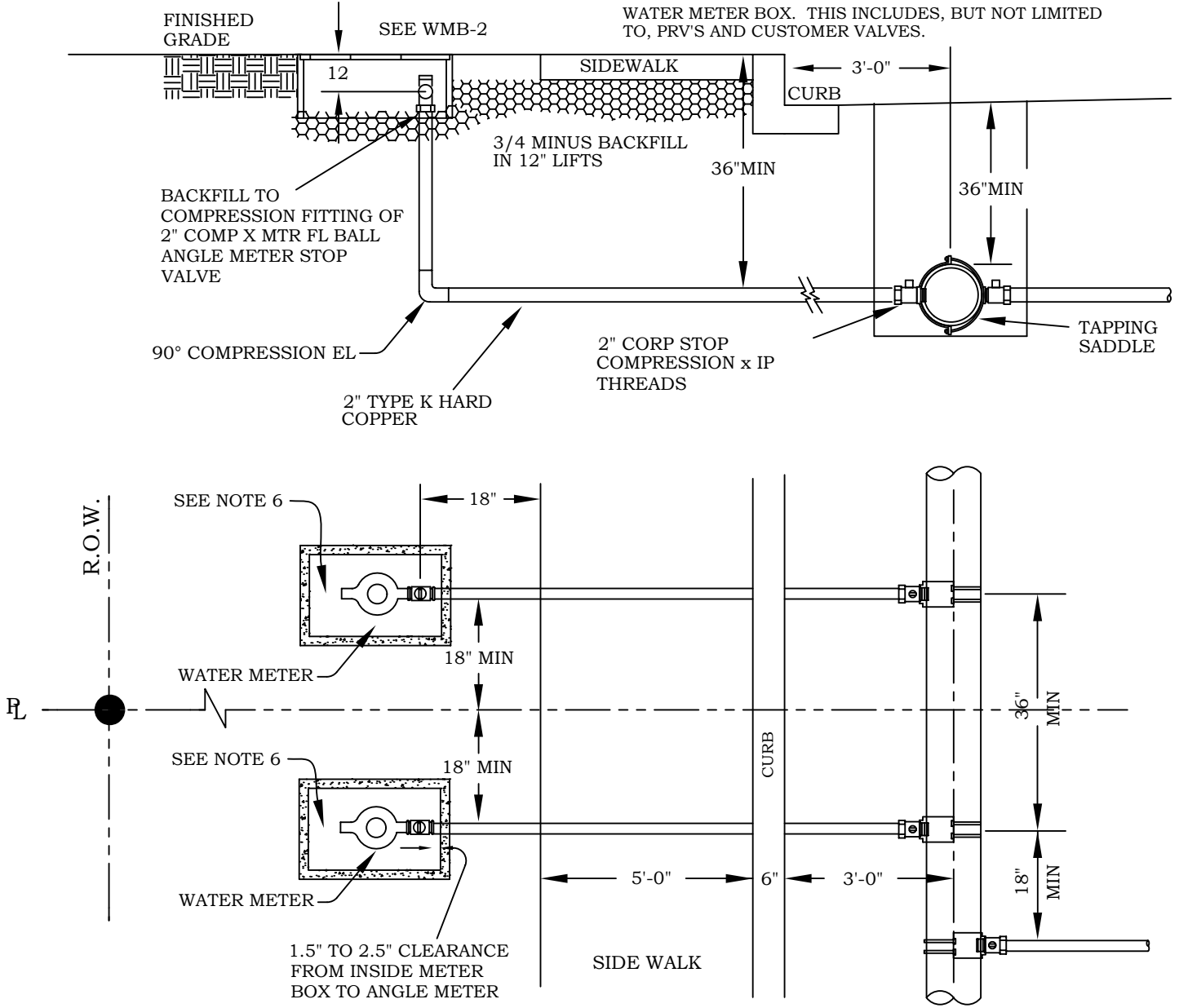



- NOTE:
1. ALL BACKFILL MATERIALS WILL MEET OR EXCEED APPLICABLE STANDARDS FOR TYPE AND COMPACTIONS. SEE TBF-1 & TBF-2.
 2. SEE WMI-CSS & WMI-GS FOR CURB AND GREENWAY INSTALLATION OF METER BOXES.
 3. SERVICE LINES FOR 1 1/2" AND 2" METERS SHALL BE PLUMBED WITH 2" TYPE K HARD COPPER.
 4. ALL MATERIAL SHALL MEET NSF 61, ANNEX G, NSF 372 CERTIFICATION
 5. REFER TO THE APPROVED MATERIALS LIST
 6. ALL PRIVATE FACILITIES MUST BE LOCATED OUTSIDE THE WATER METER BOX. THIS INCLUDES, BUT NOT LIMITED TO, PRV'S AND CUSTOMER VALVES.



NOT TO SCALE



WATER METER INSTALLATION AND TRENCH PROFILE 2" SERVICE

		<h2 style="margin: 0;">WATER METER INSTALLATION AND TRENCH PROFILE 2" SERVICE</h2>		
DATE	REVISION			
DATE	12/10/14			
DRAWN	SLW	APPROVED	WSC	SPEC NO. WMS-2