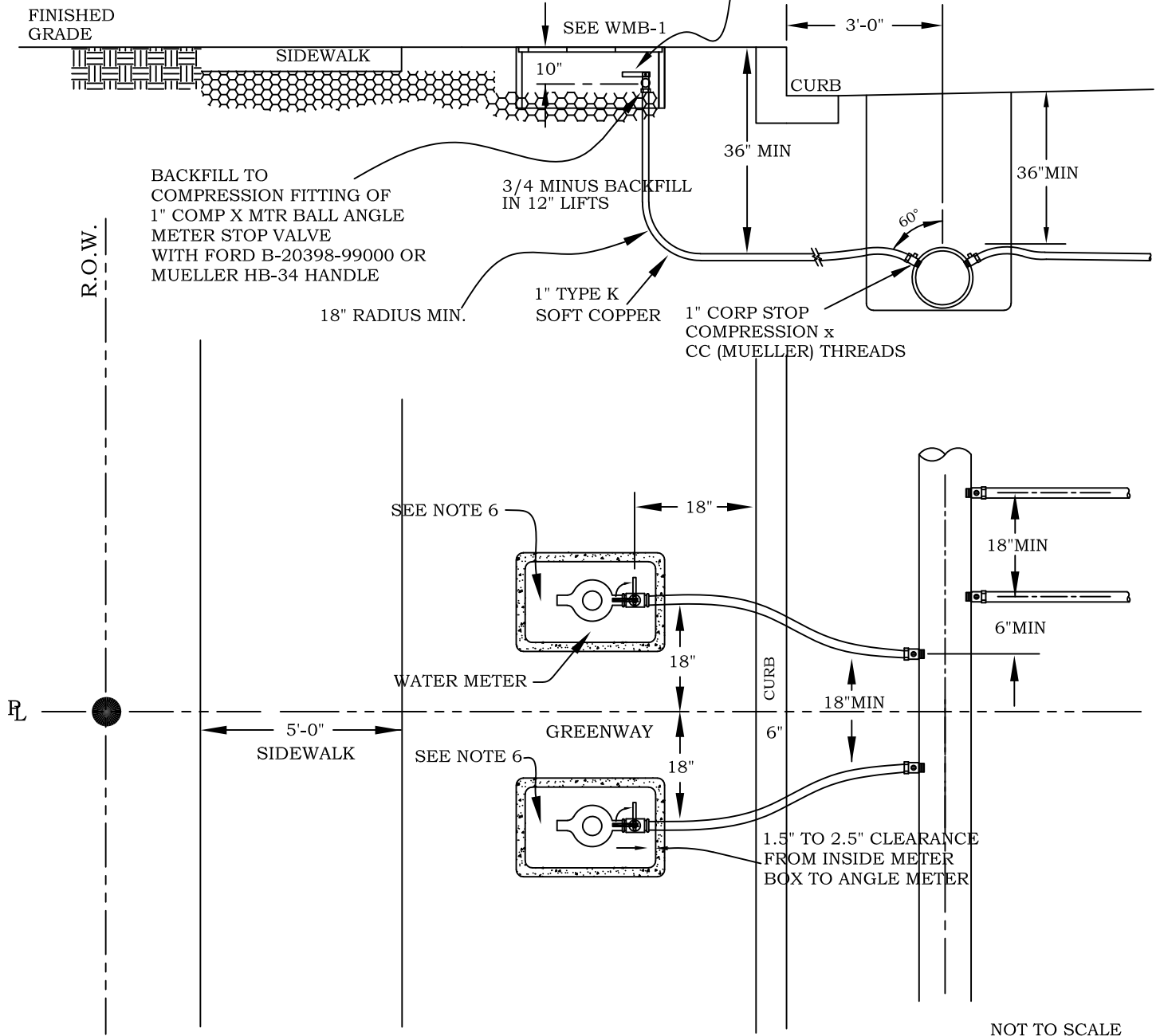


- NOTE:
1. ALL BACKFILL MATERIALS WILL MEET OR EXCEED APPLICABLE STANDARDS FOR TYPE AND COMPACTIONS. SEE TBF-1 & TBF-2.
 2. SEE WMI-CSS & WMI-GS FOR CURB AND GREENWAY INSTALLATION OF METER BOXES.
 3. OFFSET IN SAME PLANE, 18" APART.
 4. ALL MATERIAL SHALL MEET NSF 61, ANNEX G, NSF 372 CERTIFICATION
 5. REFER TO THE APPROVED MATERIALS LIST
 6. ALL PRIVATE FACILITIES MUST BE LOCATED OUTSIDE THE WATER METER BOX. THIS INCLUDES, BUT NOT LIMITED TO, PRV'S AND CUSTOMER VALVES.

NOTE: SEE APPROVED MATERIAL LIST FOR METER STOP SHUT-OFF HANDLE



WATER METER INSTALLATION AND TRENCH PROFILE 1" SERVICE

DATE	REVISION

DATE	12/22/20	APPROVED	WSC
DRAWN	SLW	APPROVED	WSC
SPEC NO.		WMS-1	