

TOP
 No. 5106-T-3-332P
 6,330 lbs

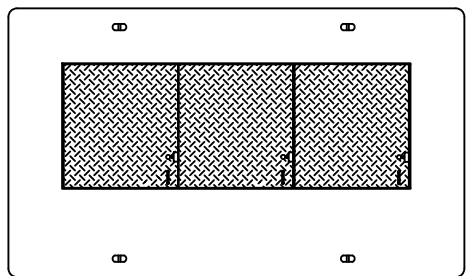
2-Ton Lift Anchor
 (4 Places in Top)

Full 180° open
 spring assisted H-20 rated
 galvanized diamond plate
 doors with locking latch.
 Optional: non-slip door

Joint Sealant Must Be Applied
 Per Manufacturer Instructions

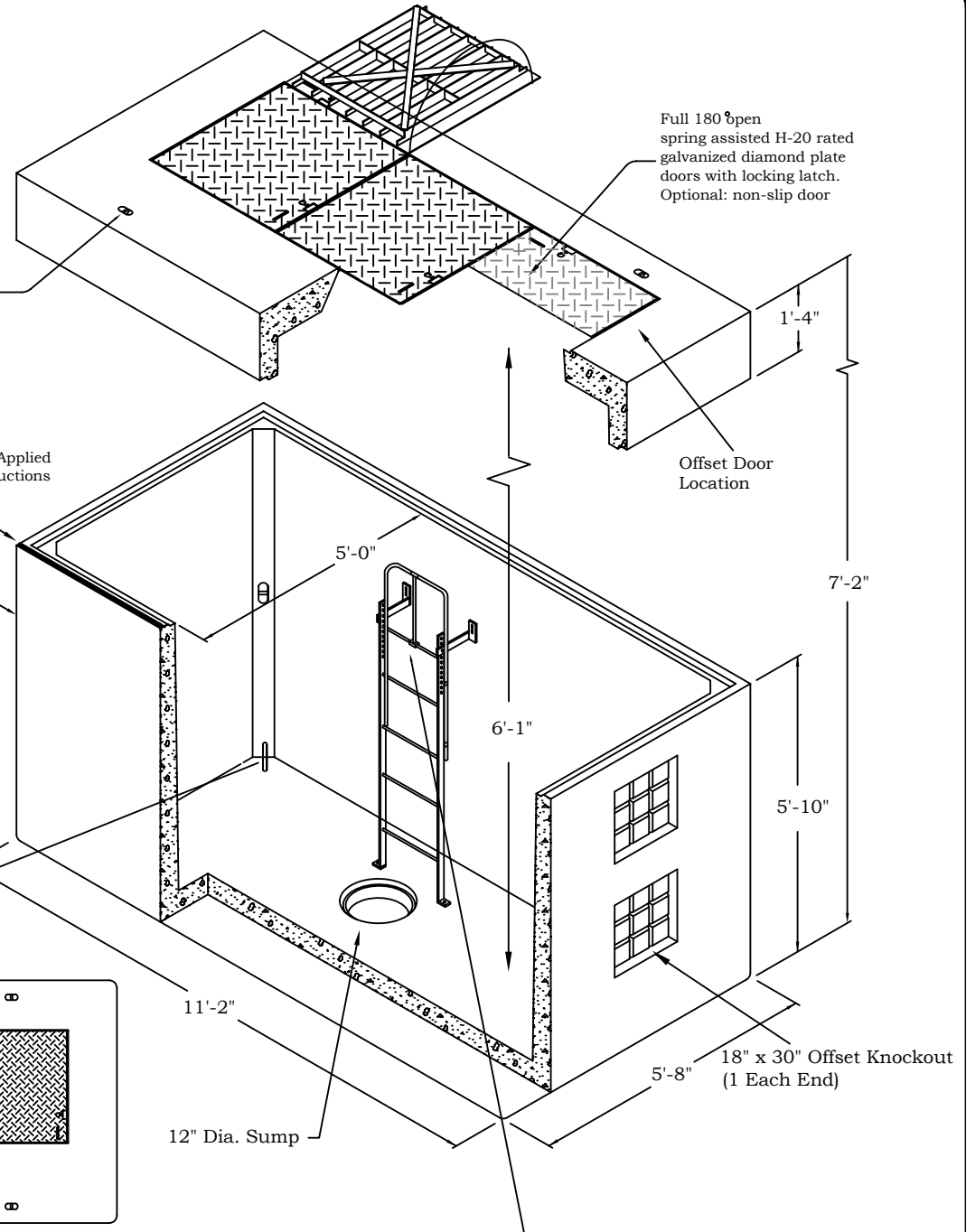
BASE
 No. 5106-1-B
 13,270 lbs

Galvanized Pull/Lift Iron
 (1 Each Corner)



LOCKING GALV. OFFSET STEEL DOORS
 No. 5106-T-3-332P
 6,330 lbs

Galvanized, OSHA Approved Wall-Mount
 Ladder with Pull-up Extension



THIS VAULT WILL WORK FOR WATER METER SIZES	THIS VAULT WILL WORK FOR DDC SIZES WITHOUT F.D.C. TEE	THIS VAULT WILL WORK FOR DDC SIZES WITH F.D.C. TEE & CHECK VALVE INSIDE VAULT
	10"	8"
		10"

NOT TO SCALE



UTILITY VAULT 5106-1-WA/LA

DATE	REVISION		
		DATE 12/10/14	
		DRAWN SLW	APPROVED WSC
			SPEC NO. V5106