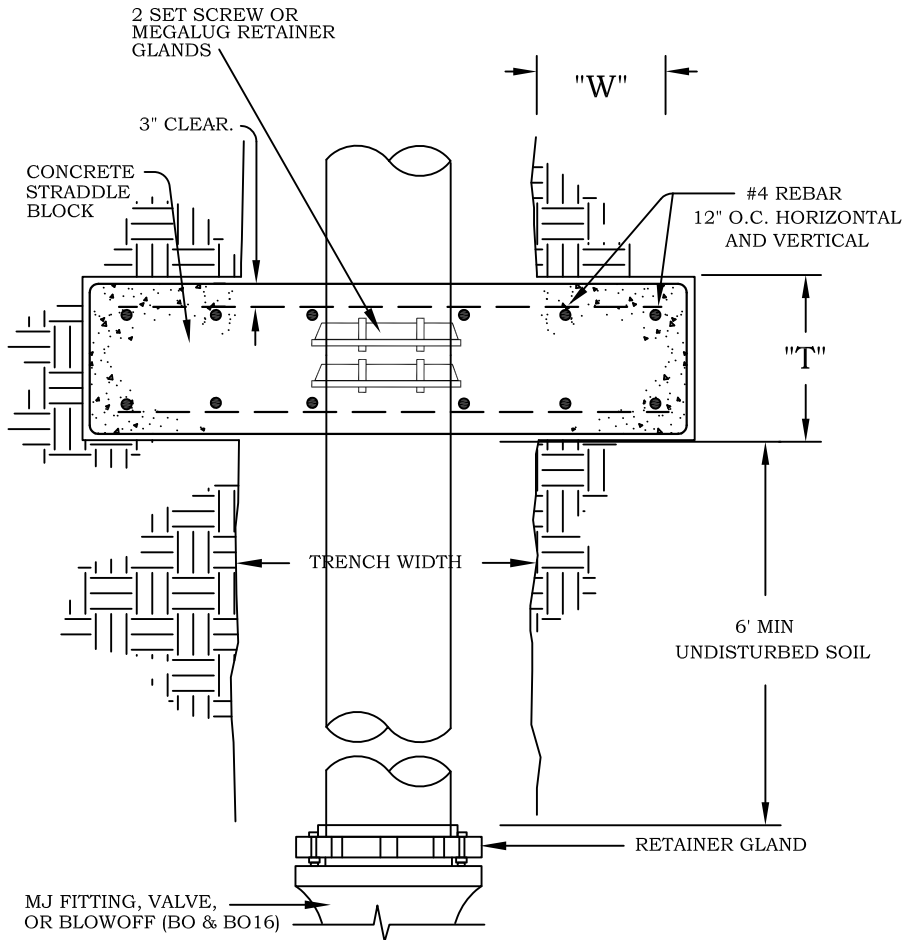


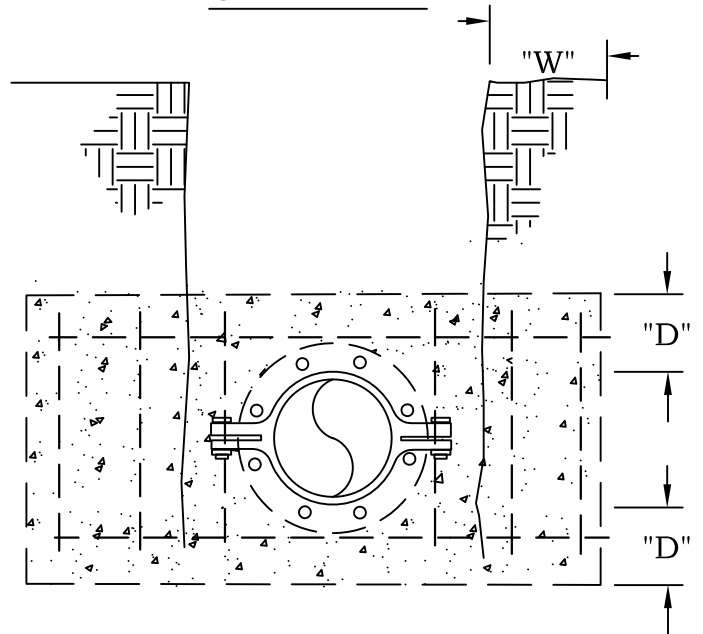
# TOP VIEW



## NOTES:

1. STRADDLE BLOCKS SHALL BE BASED ON THE FOLLOWING:
  - a.) 150 PSI WATER PRESSURE
  - b.) SOIL BEARING CAPACITY
2. BEARING AREA OF BLOCK SHALL BE AGAINST UNDISTURBED SOIL.
3. STRADDLE BLOCK SHALL HAVE A MINIMUM OF 18" COVER.
4. CONCRETE SHALL HAVE A MIN. 28 DAY STRENGTH OF 3000 PSI.
5. 2-SET SCREW OR MEGALUG RETAINER GLANDS ENCASED IN CONCRETE STRADDLE BLOCK.
6. PLACE STRADDLE BLOCK IN UNDISTURBED SOIL.
7. LARGER SIZES TO BE ENGINEERED AND SUBMITTED FOR APPROVAL.

# SIDE VIEW



PIPE SIZE	"W"	"D"	"T"
12"	34"	15"	TRENCH WIDTH
16"	42"	18"	TRENCH WIDTH

NOT TO SCALE



## STRADDLE BLOCK FOR 12" & 16" PIPE

DATE	REVISION		
		DATE 12/8/14	
		DRAWN SLW	APPROVED WSC
			SPEC NO. SB-2