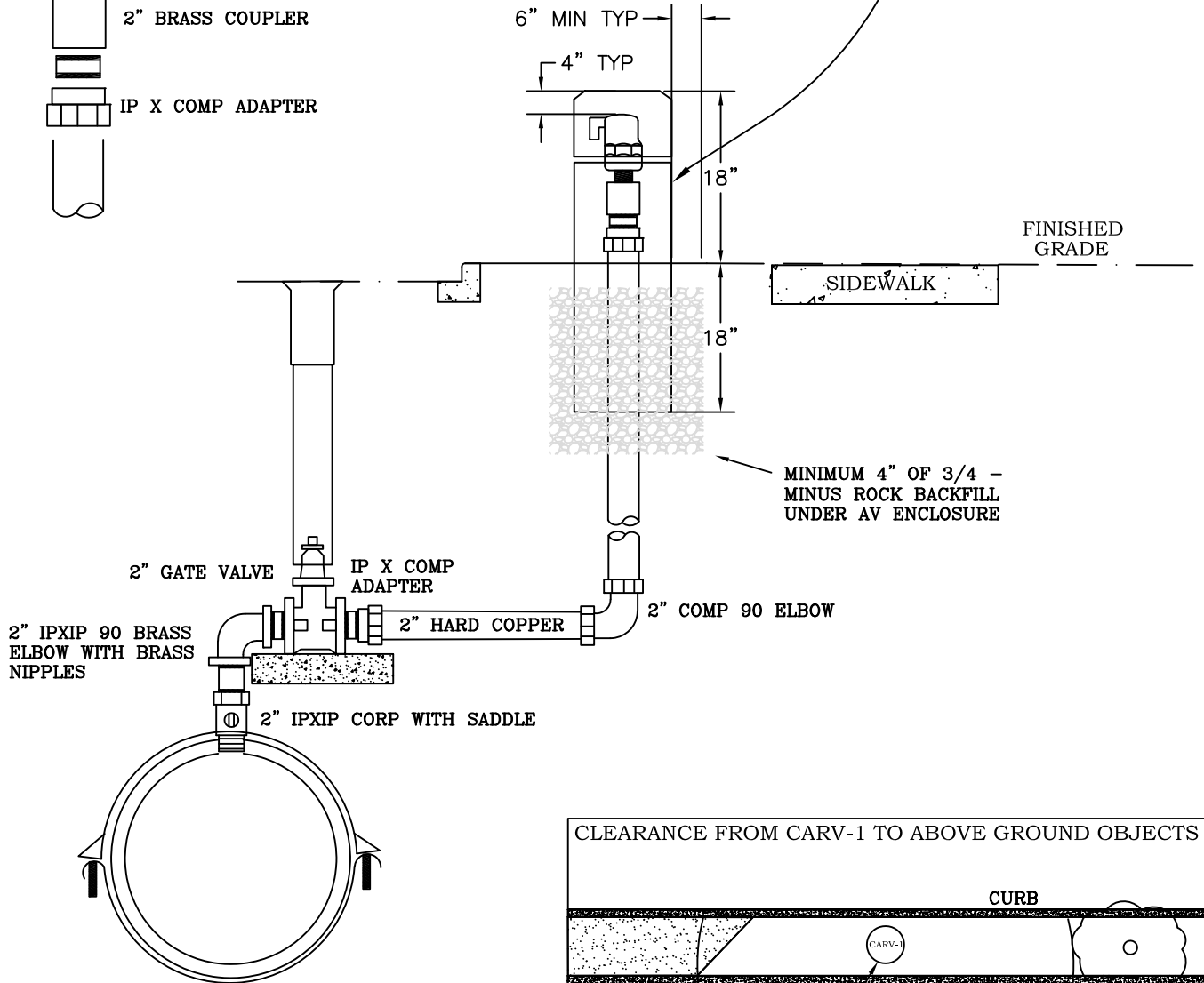


AV ENCLOSURE - ARMORCAST
P6002010 SLIDE BAR - GRANITE
COLOR (OR MW&L APPROVED EQUAL)



NOTES:

1. INSTALL COMBINATION AIR RELIEF VALVE AT HIGHEST ELEVATION IN WATER MAIN
2. SEE TRENCH SPEC DETAILS; TBF-1 AND TBF-2 FOR BACKFILL IN PAVED AND UNPAVED AREAS



2" COMBINATION AIR RELIEF VALVE INSTALLATION

DATE	REVISION

DATE	11/02/20		
DRAWN	SLW	APPROVED	WSC
		SPEC NO.	CARV-1