

SERVICE BELOW 0-600 VOLTS 0-800 AMPS

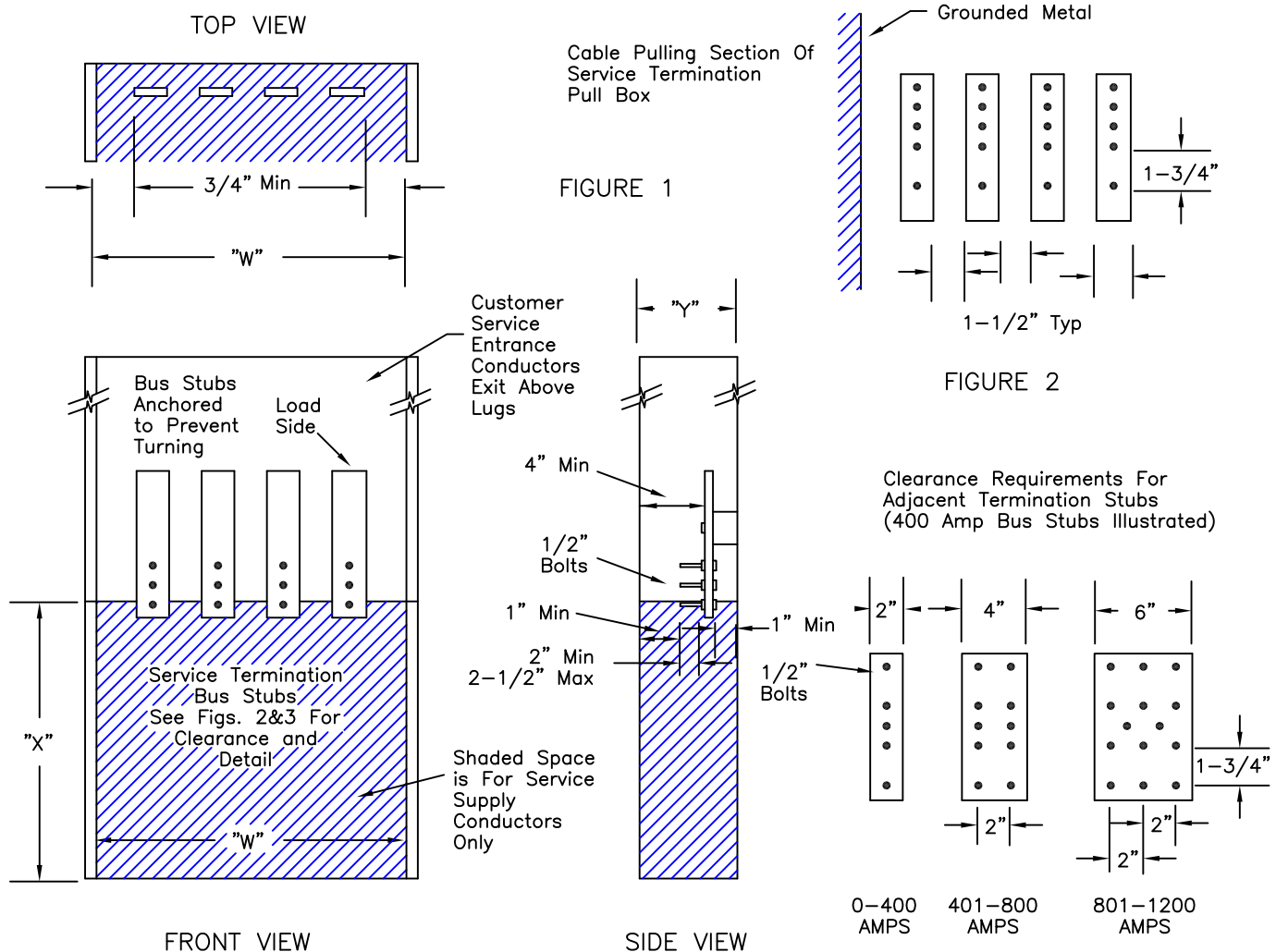


TABLE 1 (Minimum Pullbox dimensions)

SERVICE AMPACITIES	"W"		"Y" DEPTH	LUG "X" HEIGHT
	3-WIRE	4-WIRE		
0-200	10-1/2"	14"	6"	11"
201-400	10-1/2"	14"	6"	22"
401-800	16-1/2"	22"	11"	26"



ENCLOSURE FOR UNDERGROUND SERVICE TERMINATION

DATE	REVISION			DRAWING NO.	91-19-SR
	REFERENCE EUSERC 343			DATE	2/10/99
		DRAWN	JDW	APPROVED	DJE
				SPEC NO.	H30