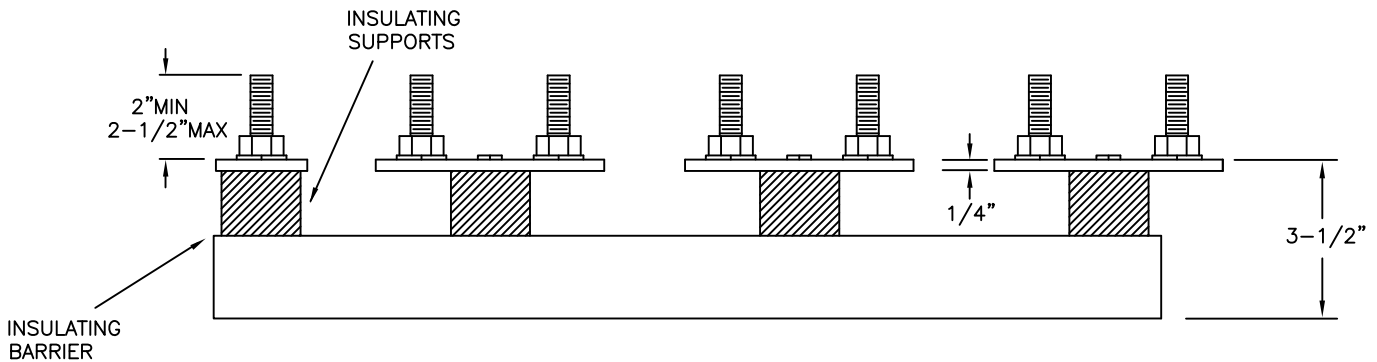
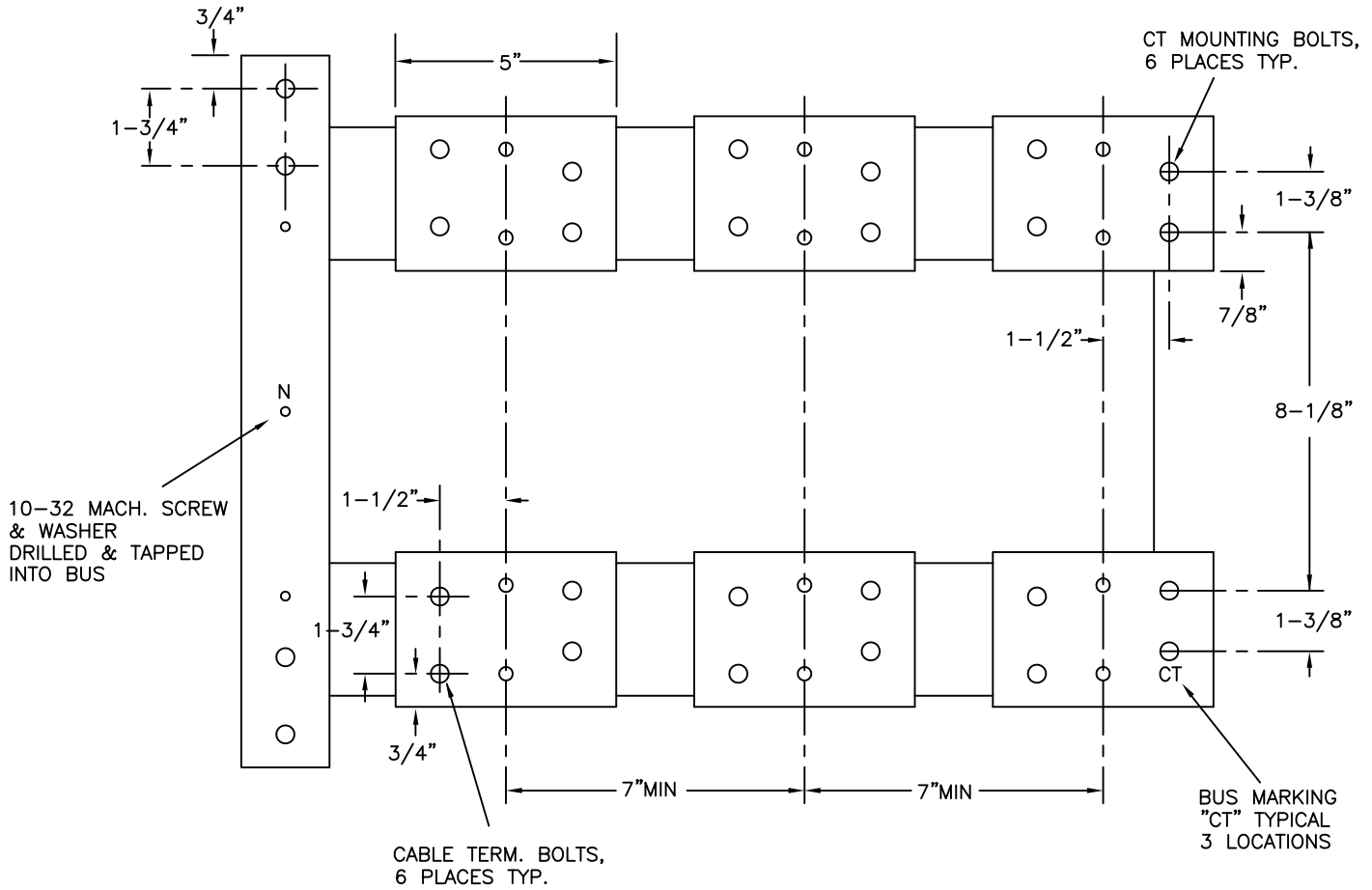


TO 800 AMP 600 VOLT 3 PHASE 4 WIRE



50K A.I.C. RATING



TRANSFORMER MOUNTING BASE
FOR INSTALLATION IN CURRENT
TRANSFORMER ENCLOSURE

DATE	REVISION
	REFERENCE EUSERC 329A
9/23/96	UPDATE MOUNTING BASE

DATE	2/10/99	DRAWING NO.	91-20-SR
DRAWN	JDW	APPROVED	DJE
		SPEC NO.	H28-A