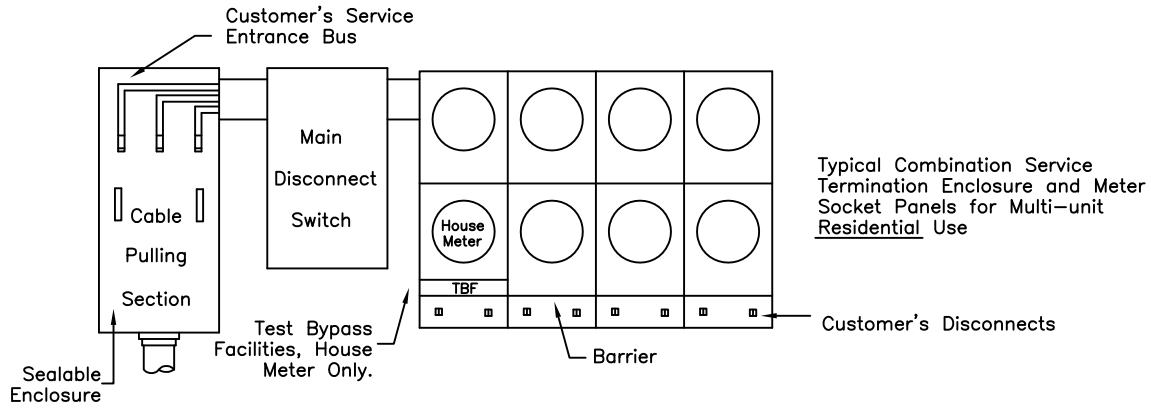


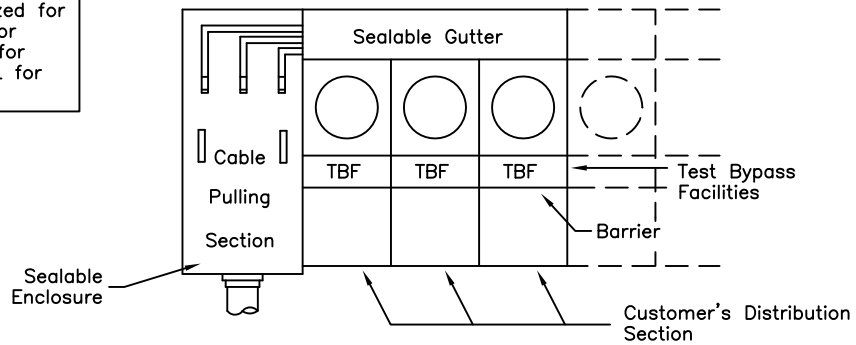
RESIDENTIAL



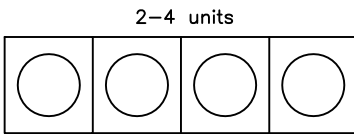
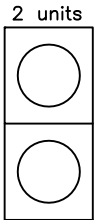
NON-RESIDENTIAL

Cable pulling section must be sized for MW&L service termination H-30 or must have bus extension drilled for utility landing lugs. Consult MW&L for details.

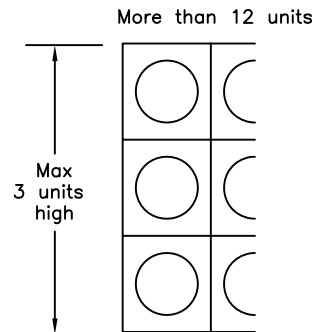
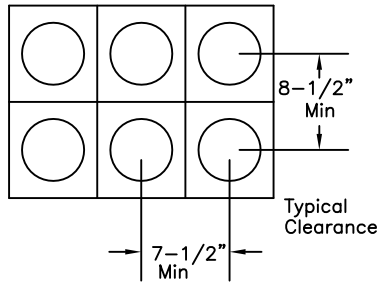
Typical Combination Service Termination Enclosure and Meter Socket Panels for Multi-unit Non-Residential Use



ACCEPTABLE MULTIPLE METER SOCKET CONFIGURATION



6 Max per NEC unless w/Main Disc. Switch



NOTE: See article 8 and section 7 for written requirements.



MULTIPLE METER SOCKET INSTALLATIONS

DATE	REVISION
	REFERENCE EUSERC 343
10/7/96	MODIFIED 4-12 UNITS

DATE	2/10/99	DRAWING NO.	91-21-SR
DRAWN	JDW	APPROVED	RAB
		SPEC NO.	H26