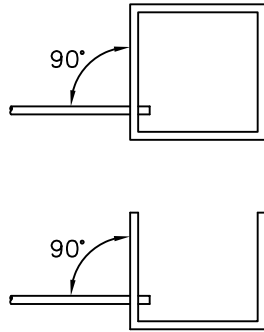
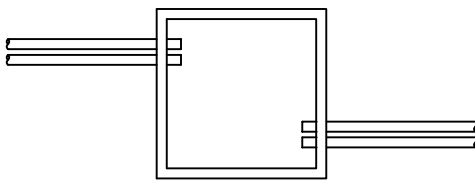


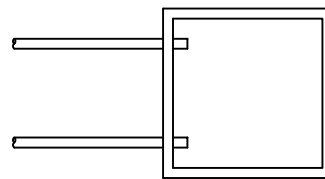
1. CONDUITS SHALL ENTER VAULTS AS PERPENDICULAR TO VAULT WALLS AS POSSIBLE.



2. WHENEVER POSSIBLE MULTIPLE CONDUITS SHALL ENTER VAULT FROM ONE END OF A PARTICULAR SIDE.

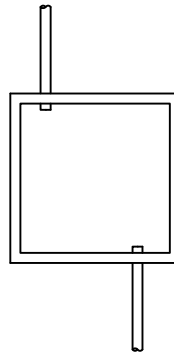


PREFERRED



BY SPECIAL
MW&L APPROVAL
ONLY

3. AVOID ENTERING VAULTS FROM ADJACENT CORNERS, BUT IF NECESSARY ALLOW A 6" STAGGER BETWEEN CONDUIT ENTRANCES. WHENEVER POSSIBLE ENTERING THE VAULT AT OPPOSITE CORNERS IS PREFERRED.



PREFERRED

SHEET: 1 OF 2



VAULT CONDUIT INSTALLATION NOTES AND DETAILS

DATE	REVISION	APPROVED		
7/13/2012	REVISED TO UPDATE CURRENT STANDARD	JCD		
			DATE	2/10/99
			DRAWN	JDW
			APPROVED	DJE
			SPEC NO. VCD1	